
+ Plus Bar
Sim Angus



9th Annual Bull Sale

April 20th, 2024 at 1:00 pm CST

At The Ranch – 76945 RD 428 – Lexington, NE

9th Annual Bull Sale

Dear cattle producers,

It is our pleasure to welcome you to the **9th Annual Plus Bar SimAngus** bull sale. First, we want to thank our past customers, friends, and family for support over the years. We appreciate your trust and are grateful for the relationships developed along the way.

With the beef industry having the lowest cow numbers in roughly 70 years – and high-value calves and fed cattle as well as high costs of production – genetics for improved efficiency are as important as ever. With your diverse needs in mind, we've attempted to offer a multi-purpose set of bulls with various combinations of genetic merit for calving ease, maternal productivity, feedlot performance and carcass merit.

These bulls have been genomic tested to increase the accuracy of EPD and to authenticate recorded pedigree information, which also helps to inform crossbreeding for heterosis. Based on experience, we have confidence in these bulls and offer an unconditional first breeding season guarantee.

We look forward to seeing you on Saturday, April 20th. Bulls may be viewed at the ranch anytime or starting at 11:00 am on sale day. Join us for lunch and the auction will begin at 1:00 pm. If you are unable to attend, please let us know prior to the sale and arrangements can be made for bidding.

If you have any questions, please don't hesitate to call.

Sincerely,

Plus Bar SimAngus

Ralph Benjamin
303-325-1276

A3 Ranch

Kent Andersen
303-601-1332

9th Annual Bull Sale

Saturday, April 20, at 1:00 pm

At The Ranch – Lexington, NE

Lunch

Be our guest for lunch beginning at 11:30 am.

Viewing

Bulls may be viewed at any time prior to the sale at the ranch. On sale day, bulls may be viewed starting at 11:00 am.

Herd Health

Bulls sell vaccinated and fertility tested.

First Breeding Season Guarantee

Bulls are 100% guaranteed during the first breeding season. During that time, if you lose use of the bull due to injury or death, we will give you full credit toward the purchase of a new bull.

Delivery

Free keep and feed on bulls until delivery. Free in state delivery available.

Announcements

Announcements made sale day and during sale take precedence over printed materials. All persons attending the sale do so at their own risk. Plus Bar Ranch and sales force assume no liability, legal or otherwise, for any accidents occurring in or about the premises.

Terms and Conditions

All cattle sell under the terms and conditions of the American Simmental Association. Terms available sale day.

REFERENCE SIRES

| Name | ASA Number | Breeds | CE | BW | WW | YW | MCE | MM | Stay | CW | Marb | REA | API | TI |
|----------------------|------------|---------------|------|------|-----|-----|------|------|------|------|------|------|-----|-----|
| A3R VISIONARY 215G | 3619412 | 1/4 SM 3/4 AN | 5.5 | 2.4 | 87 | 142 | 3.8 | 25 | 19.2 | 53.3 | .38 | 0.78 | 132 | 83 |
| CCR WACO 4142G | 3703573 | 5/8 SM 3/8 AN | 18 | -3.8 | 64 | 105 | 11.2 | 21 | 11.8 | 39.2 | 1.02 | 0.66 | 174 | 95 |
| CLRS GUARDIAN 317G | 3563436 | PB SM | 15.7 | -2.4 | 100 | 151 | 9.3 | 32.3 | 22.7 | 55.8 | .74 | 1.26 | 200 | 113 |
| CLRS HERDBOOK 316H | 3709219 | 5/8 SM 3/8 AN | 10.8 | -0.9 | 91 | 135 | 7.1 | 24.4 | 16.8 | 46 | .37 | 1.25 | 144 | 92 |
| GW TRIPLE CROWN 018C | 2954741 | 5/8 SM 3/8 AN | 14.9 | -2 | 89 | 149 | 9.9 | 18.4 | 15.5 | 63.5 | .72 | 1.27 | 170 | 101 |
| HOOK'S EAGLE 6E | 3253742 | 3/4 SM 1/4 AN | 14.4 | -2.1 | 99 | 155 | 4.8 | 20.5 | 17.1 | 43.7 | .60 | 1.38 | 169 | 104 |
| HOOK'S GALILEO 210G | 3563620 | 3/4 SM 1/4 AN | 17.7 | -2.3 | 89 | 140 | 11.8 | 38 | 19.2 | 43.4 | 1.18 | 0.62 | 204 | 114 |
| IR ORIGINAL H341 | 3839855 | 1/2 SM 1/2 AN | 11.4 | 0.7 | 95 | 158 | 6.2 | 24.2 | 12.3 | 50 | .74 | 1.04 | 157 | 102 |
| POSS RAWHIDE | 3876177 | PB AN | 16.6 | -2 | 102 | 162 | 10.8 | 29.5 | 12.6 | 84.5 | .88 | 0.45 | 157 | 100 |
| TEHAMA TAHOE B767 | 3396482 | PB AN | 16 | -2.5 | 93 | 158 | 6.4 | 32.5 | 19.7 | 59.7 | .80 | 0.47 | 166 | 94 |



CLRS GUARDIAN 317G



CLRS HERDBOOK 316H



HOOK'S EAGLE 6E



HOOK'S GALILEO 210G



IR ORIGINAL H341



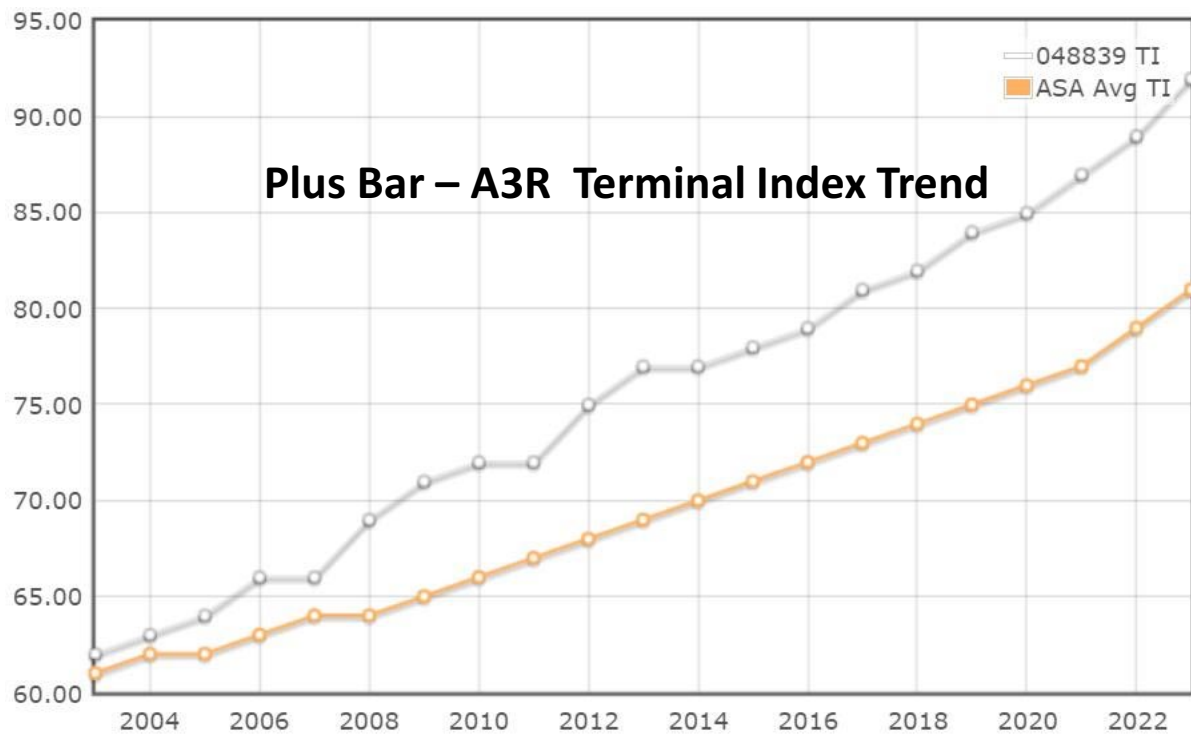
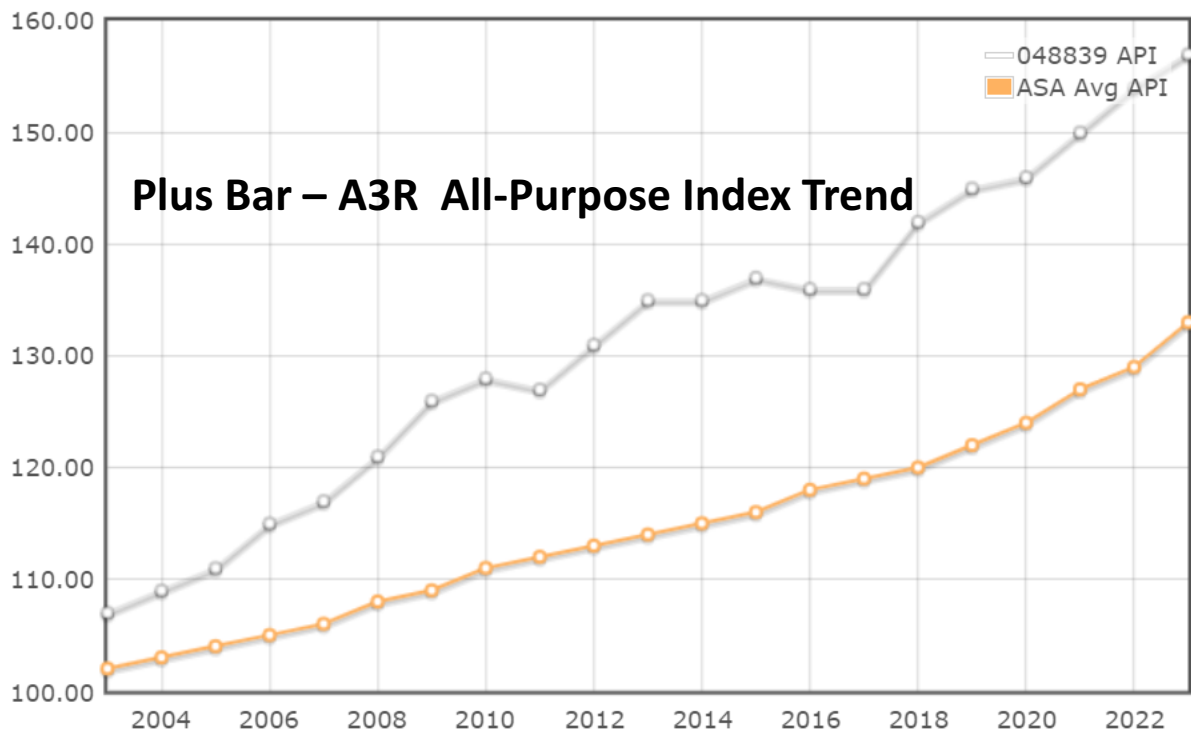
POSS RAWHIDE

The average index and trait GE-EPD - and related percent rank for this bull sale offering - are highlighted in green. An average bull in this catalog ranks in the top 10% of Hybrid Simmental for All-Purpose (API) and Terminal (TI) indexes.

Hybrid Simmental Percentiles Table

| % | API | TI | CE | BW | WW | YW | MCE | MLK | STY | CWT | YG | MRB | BF | REA |
|-----|-----|-----|----|------|-----|-----|-----|-----|-----|-----|-------|------|-------|------|
| 1 | 187 | 104 | 21 | -5.6 | 101 | 162 | 13 | 35 | 22 | 67 | -0.48 | 1.04 | -0.10 | 1.22 |
| 2 | 180 | 101 | 20 | -4.9 | 98 | 157 | 12 | 34 | 21 | 62 | -0.45 | 0.93 | -0.09 | 1.16 |
| 3 | 176 | 99 | 19 | -4.4 | 96 | 154 | 11 | 33 | 21 | 59 | -0.43 | 0.88 | -0.09 | 1.11 |
| 4 | 173 | 98 | 19 | -4.0 | 95 | 151 | 11 | 32 | 20 | 57 | -0.42 | 0.83 | -0.08 | 1.08 |
| 5 | 170 | 97 | 18 | -3.7 | 93 | 149 | 11 | 32 | 20 | 55 | -0.41 | 0.8 | -0.08 | 1.05 |
| 10 | 162 | 94 | 17 | -2.8 | 89 | 142 | 10 | 30 | 19 | 50 | -0.37 | 0.69 | -0.07 | 0.96 |
| 15 | 157 | 91 | 16 | -2.2 | 87 | 137 | 9 | 29 | 18 | 46 | -0.34 | 0.62 | -0.07 | 0.9 |
| 20 | 152 | 89 | 15 | -1.7 | 85 | 133 | 9 | 28 | 17 | 43 | -0.32 | 0.57 | -0.06 | 0.86 |
| 25 | 149 | 88 | 15 | -1.3 | 83 | 130 | 8 | 27 | 17 | 41 | -0.30 | 0.52 | -0.06 | 0.82 |
| 30 | 146 | 86 | 14 | -1.0 | 81 | 127 | 8 | 26 | 16 | 39 | -0.28 | 0.48 | -0.05 | 0.79 |
| 35 | 142 | 85 | 14 | -0.6 | 80 | 124 | 8 | 26 | 16 | 37 | -0.26 | 0.45 | -0.05 | 0.76 |
| 40 | 139 | 84 | 13 | -0.4 | 78 | 122 | 7 | 25 | 16 | 36 | -0.25 | 0.42 | -0.05 | 0.73 |
| 45 | 136 | 82 | 13 | -0.1 | 77 | 119 | 7 | 24 | 15 | 34 | -0.23 | 0.39 | -0.04 | 0.7 |
| 50 | 133 | 81 | 13 | 0.2 | 76 | 117 | 7 | 24 | 15 | 33 | -0.21 | 0.36 | -0.04 | 0.67 |
| 55 | 131 | 80 | 12 | 0.4 | 74 | 115 | 7 | 23 | 14 | 31 | -0.20 | 0.33 | -0.03 | 0.65 |
| 60 | 128 | 78 | 12 | 0.7 | 73 | 112 | 6 | 23 | 14 | 30 | -0.18 | 0.3 | -0.03 | 0.62 |
| 65 | 125 | 77 | 11 | 0.9 | 72 | 110 | 6 | 22 | 13 | 28 | -0.17 | 0.27 | -0.03 | 0.59 |
| 70 | 121 | 75 | 11 | 1.2 | 70 | 107 | 6 | 22 | 13 | 27 | -0.15 | 0.24 | -0.02 | 0.56 |
| 75 | 118 | 74 | 11 | 1.5 | 69 | 105 | 5 | 21 | 12 | 25 | -0.13 | 0.21 | -0.02 | 0.53 |
| 80 | 114 | 72 | 10 | 1.8 | 67 | 102 | 5 | 20 | 11 | 23 | -0.11 | 0.18 | -0.02 | 0.5 |
| 85 | 110 | 70 | 10 | 2.2 | 65 | 98 | 4 | 19 | 11 | 21 | -0.08 | 0.15 | -0.01 | 0.46 |
| 90 | 106 | 68 | 9 | 2.7 | 63 | 94 | 4 | 18 | 10 | 18 | -0.05 | 0.11 | 0.00 | 0.4 |
| 95 | 99 | 65 | 7 | 3.4 | 59 | 88 | 3 | 17 | 8 | 14 | 0.00 | 0.05 | 0.01 | 0.32 |
| Avg | 133 | 81 | 13 | 0.2 | 76 | 117 | 7 | 24 | 15 | 33 | -0.21 | 0.36 | -0.04 | 0.67 |

Plus Bar – A3R Genetic Trends for All-Purpose and Terminal Indexes





Lot 1

1

A3R GUARDIAN 131L

ASA# (4248631)

Tattoo: 131L • BD: 3/20/23
Homo Black • Polled • 5/8 SM 3/8 AN

Sire: CLRS GUARDIAN 317G
HOOK'S BEACON 56B
CLRS ALWAYS XCELLENT

Dam: A3R HICKOK 32H
MILL BAR HICKOK 7242
A3R XAVIER 151D

| | |
|----------|------|
| Adj. BW | 91 |
| Adj. WW | 609 |
| WW Ratio | 104 |
| Adj. YW | 989 |
| YW Ratio | 99 |
| Adj. SC | 37.3 |

| CE | BW | WW | YW | MCE | MM | MWW | Stay | CW | YG | MB | BF | REA | API | TI |
|------|-----|----|-------|-----|------|------|------|----|-----|-----|-------|-----|-----|----|
| 12.6 | 0.9 | 93 | 147.6 | 5.9 | 27.9 | 74.7 | 18.2 | 60 | -13 | .55 | -.008 | .98 | 157 | 95 |
| 50 | 70 | 10 | 10 | 70 | 20 | 10 | 15 | 3 | 80 | 25 | 90 | 10 | 15 | 10 |

Visually attractive, sound, gentle, moderate, thick, deep – GE-EPDs in the top 25% or better for growth, MILK, STAY, CW (2%), MARB and REA (10%) - lead to top 15% API and 10% TI.



Lot 2

2

A3R GUARDIAN 122L

ASA# (4248623)

Tattoo: 122L • BD: 3/18/23
Homo Black • Polled • 5/8 SM 5/16 AN 1/16 AR

Sire: CLRS GUARDIAN 317G
HOOK'S BEACON 56B
CLRS ALWAYS XCELLENT

Dam: A3R JE HOOVER 291F
SANDPOINT J EDGAR HOOVER
A3R XAVIER 68C

| | |
|----------|------|
| Adj. BW | 84 |
| Adj. WW | 606 |
| WW Ratio | 104 |
| Adj. YW | 983 |
| YW Ratio | 98 |
| Adj. SC | 32.2 |

| CE | BW | WW | YW | MCE | MM | MWW | Stay | CW | YG | MB | BF | REA | API | TI |
|------|------|------|-------|-----|------|------|------|------|-----|-----|-------|-----|-----|----|
| 12.2 | -1.4 | 83.3 | 127.9 | 5.6 | 30.1 | 71.8 | 22.4 | 54.1 | -14 | .78 | -.015 | .89 | 176 | 97 |
| 60 | 25 | 25 | 30 | 75 | 10 | 15 | 1 | 10 | 75 | 10 | 85 | 20 | 3 | 5 |

Index outlier – top 4% TI, 3% API and rare top 1% STAY GE-EPD – predicted to produce long-lived productive daughters and muscular progeny with top 10% CW and MARB. Dam's avg. progeny WW ratio is 110.



Lot 3

3

P B R GUARDIAN 128L

ASA# (4248628)

Tattoo: 128L • BD: 3/19/23
Homo Black • Polled • 5/8 SM 11/32 AN 1/32 CS

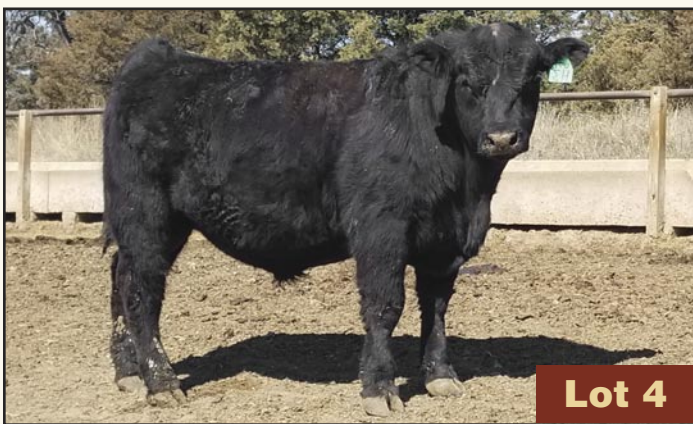
Sire: CLRS GUARDIAN 317G
HOOK'S BEACON 56B
CLRS ALWAYS XCELLENT

Dam: A3R UPSHOT 38C
EXAR UPSHOT 0562B
A3R SHEAR 92R

| | |
|----------|------|
| Adj. BW | 84 |
| Adj. WW | 590 |
| WW Ratio | 108 |
| Adj. YW | 1003 |
| YW Ratio | 102 |
| Adj. SC | 38.3 |

| CE | BW | WW | YW | MCE | MM | MWW | Stay | CW | YG | MB | BF | REA | API | TI |
|------|-----|------|-----|-----|----|------|------|------|-----|-----|-------|-----|-----|----|
| 14.1 | 0.5 | 87.6 | 133 | 7.7 | 31 | 75.2 | 23.2 | 54.4 | -11 | .56 | -.001 | .91 | 166 | 92 |
| 35 | 60 | 15 | 20 | 40 | 10 | 5 | 1 | 10 | 85 | 25 | 90 | 15 | 10 | 15 |

Top GE-EPD and rank (1%) for STAY of offering, combined with high MILK (10%), WW (15%), CW (5%) and REA (15%) – top 15% TI and 10% API – gentle disposition.



Lot 4

4

P B R EAGLE 77L

ASA# (4248585)

Tattoo: 77L • BD: 3/13/23
Black • Polled • 1/2 SM 1/2 AN

Sire: HOOK'S EAGLE 6E
HOOK'S BLACK HAWK 50B
HOOK'S CRYSTAL 1C

Dam: P B R TAHOE 3H
TEHAMA TAHOE B767
P B R ABSOLUTE 41D 251F

| | |
|----------|------|
| Adj. BW | 66 |
| Adj. WW | 563 |
| WW Ratio | 103 |
| Adj. YW | 1018 |
| YW Ratio | 103 |
| Adj. SC | 33.9 |

| CE | BW | WW | YW | MCE | MM | MWW | Stay | CW | YG | MB | BF | REA | API | TI |
|------|------|------|-------|-----|------|------|------|------|-----|-----|-------|-----|-----|----|
| 17.2 | -3.9 | 82.6 | 132.9 | 7.9 | 27.2 | 69.1 | 16.8 | 45.3 | -18 | .51 | -.009 | .96 | 163 | 94 |
| 10 | 5 | 30 | 25 | 35 | 25 | 20 | 30 | 20 | 65 | 30 | 90 | 15 | 10 | 10 |

Visual standout, stout, curve-bender – GE-EPDs in the top 5% BW and top 25% or better for YW, ADG, MILK, MWW, CW, and REA – top 15% for both TI and API!

5**A3R EAGLE 94L**

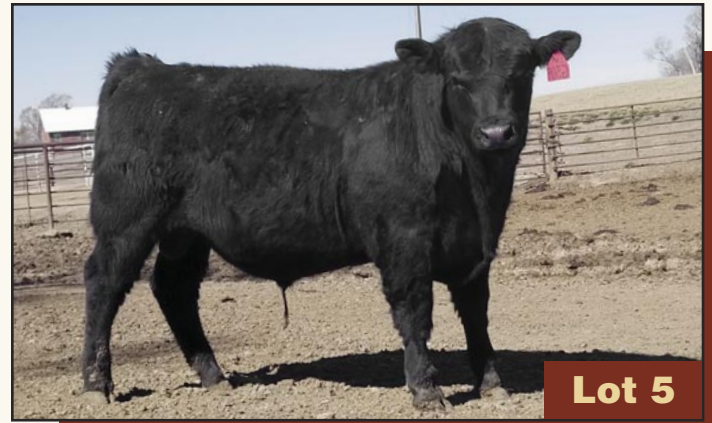
ASA# (4248602)

Tattoo: 94L • BD: 3/16/23
Homo Black • Polled • 1/2 SM 15/32 AN 1/32 CSSire: HOOK'S EAGLE 6E
HOOK'S BLACK HAWK 50B
HOOK'S CRYSTAL 1CDam: A3R HICKOK 309G
MILL BAR HICKOK 7242
A3R TOP GRADE 112D

| | |
|----------|------|
| Adj. BW | 80 |
| Adj. WW | 662 |
| WW Ratio | 113 |
| Adj. YW | 1141 |
| YW Ratio | 114 |
| Adj. SC | 36.6 |

| CE | BW | WW | YW | MCE | MM | MWW | Stay | CW | YG | MB | BF | REA | API | TI |
|------|------|------|-------|-----|------|------|------|------|------|-----|-------|-----|-----|----|
| 13.4 | -1.5 | 91.5 | 145.1 | 5.6 | 26.8 | 72.9 | 20.6 | 41.7 | -1.6 | .63 | -.001 | .90 | 171 | 99 |
| 40 | 25 | 10 | 10 | 75 | 30 | 10 | 3 | 25 | 70 | 15 | 90 | 20 | 5 | 4 |

High API and TI (top 10% & 4%) Eagle son with unique combination of sensible BW (top 25%), high growth (10% WW and YW), very high STAY (4%) and DOC (5%), with strong MARB (15%) and REA (20%). High production dam has produced 3 calves with avg. WW ratio of 110 – moderate frame size and stout made.

**Lot 5****6****P B R EAGLE 132L**

ASA# (4248632)

Tattoo: 132L • BD: 3/20/23
Homo Black • Polled • 1/2 SM 15/32 AN 1/32 CSSire: HOOK'S EAGLE 6E
HOOK'S BLACK HAWK 50B
HOOK'S CRYSTAL 1CDam: A3R PREDESTINED 28Y
G A R PREDESTINED
A3R SHEAR 92R

| | |
|----------|------|
| Adj. BW | 89 |
| Adj. WW | 563 |
| WW Ratio | 103 |
| Adj. YW | 1051 |
| YW Ratio | 107 |
| Adj. SC | 34.8 |

| CE | BW | WW | YW | MCE | MM | MWW | Stay | CW | YG | MB | BF | REA | API | TI |
|------|----|------|-------|-----|------|------|------|------|------|-----|-------|-----|-----|-----|
| 11.2 | 1 | 91.9 | 153.2 | 4.4 | 26.4 | 72.3 | 14.7 | 57.4 | -1.0 | .83 | -.002 | .96 | 164 | 101 |
| 70 | 70 | 10 | 4 | 90 | 30 | 10 | 50 | 4 | 85 | 5 | 95 | 15 | 10 | 2 |

High growth and quality grade specialist – GE-EPDs in top 5% or better YW, ADG, DOC, CW and MARB, contributing to top 3% TI and 10% API.

7**A3R EAGLE 90L**

ASA# (4248598)

Tattoo: 90L • BD: 3/15/23
Homo Black • Polled • 1/2 SM 7/16 AN 1/16 ARSire: HOOK'S EAGLE 6E
HOOK'S BLACK HAWK 50B
HOOK'S CRYSTAL 1CDam: A3R HOOVER 79B
HOOVER DAM
A3R DREAM 140Y

| | |
|----------|------|
| Adj. BW | 74 |
| Adj. WW | 535 |
| WW Ratio | 92 |
| Adj. YW | 944 |
| YW Ratio | 94 |
| Adj. SC | 35.6 |

| CE | BW | WW | YW | MCE | MM | MWW | Stay | CW | YG | MB | BF | REA | API | TI |
|------|------|------|-------|-----|------|------|------|------|------|-----|-------|-----|-----|----|
| 15.7 | -3.2 | 65.4 | 108.5 | 6.8 | 24.4 | 56.7 | 19.3 | 32.2 | -.21 | .34 | -.017 | .81 | 149 | 79 |
| 20 | 10 | 85 | 70 | 55 | 50 | 75 | 10 | 55 | 55 | 55 | 85 | 30 | 30 | 60 |

Heifer bull prospect (top 10% low BW) that's moderate framed, deep-bodied, with muscle (top 30% REA) and maternal (top 10% STAY & DOC). Use to produce easy-fleshing daughters – dam has had 8 calves with 365-day CI and avg. progeny WW ratio of 103.

8**A3R GALILEO 119L**

ASA# (4248620)

Tattoo: 119L • BD: 3/18/23
Homo Black • Polled • 5/8 SM 11/32 AN 1/32 CSSire: HOOK'S GALILEO 210G
BRIDLE BIT ECLIPSE E744
HOOK'S EVITA 18EDam: A3R SUBSTANCE 34D
GW-WBF SUBSTANCE 820Y
A3R RITO 616 15M

| | |
|----------|------|
| Adj. BW | 79 |
| Adj. WW | 592 |
| WW Ratio | 101 |
| Adj. YW | 1098 |
| YW Ratio | 109 |
| Adj. SC | 35.7 |

| CE | BW | WW | YW | MCE | MM | MWW | Stay | CW | YG | MB | BF | REA | API | TI |
|------|------|------|-------|-----|------|------|------|------|------|-----|-------|-----|-----|----|
| 14.1 | -2.4 | 80.1 | 134.2 | 7.7 | 28.4 | 68.4 | 15.2 | 47.9 | -.13 | .72 | -.042 | .58 | 164 | 96 |
| 35 | 15 | 35 | 20 | 40 | 20 | 25 | 45 | 15 | 80 | 10 | 45 | 70 | 10 | 10 |

Top-notch eye appeal, EPDs, and indexes – top 10% API, TI and MARB, 15% BW, and 20% or better ADG, MILK, DOC, and CW – appears to have more muscle than REA GE-EPD indicates. Granddam - A3R Rito 616 15M – produced 13 calves through 14 years-of-age – and was the dam (6 daughters) or granddam of 45 calves during her lifetime.

**Lot 8****9****P B R GALILEO 61L**

ASA# (4248571)

Tattoo: 61L • BD: 3/12/23
Homo Black • Polled • 5/8 SM 3/8 ANSire: HOOK'S GALILEO 210G
BRIDLE BIT ECLIPSE E744
HOOK'S EVITA 18EDam: A3R GRADUATE 16D
S D S GRADUATE 006X
A3R FOCUS 4925 16B

| | |
|----------|------|
| Adj. BW | 79 |
| Adj. WW | 559 |
| WW Ratio | 102 |
| Adj. YW | 1007 |
| YW Ratio | 102 |
| Adj. SC | 37.4 |

| CE | BW | WW | YW | MCE | MM | MWW | Stay | CW | YG | MB | BF | REA | API | TI |
|------|----|-------|-------|-----|------|------|------|------|------|-----|-------|-----|-----|-----|
| 12.9 | 1 | 101.6 | 163.4 | 7.2 | 32.7 | 83.5 | 18.1 | 61.9 | -.30 | .70 | -.082 | .96 | 170 | 105 |
| 50 | 70 | 1 | 1 | 45 | 4 | 1 | 15 | 2 | 30 | 10 | 4 | 15 | 10 | 1 |

Bigger framed, high growth and carcass bull – top 1% WW, YW and TI, top 10% or better ADG, MILK, MWW, DOC, CW, MARB, FAT, REA, and API.

10**P B R GALILEO 49L**

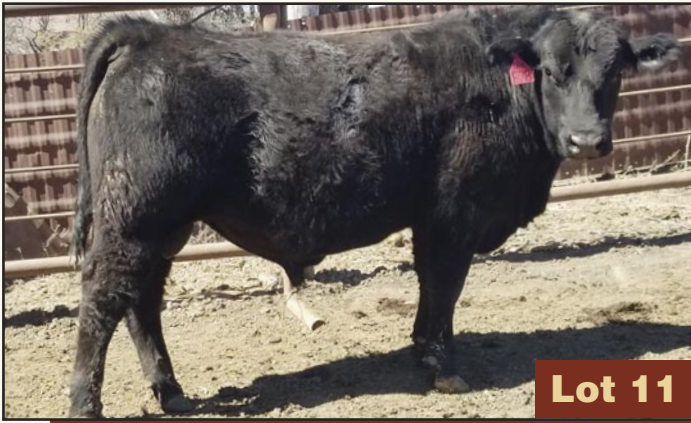
ASA# (4248560)

Tattoo: 49L • BD: 3/10/23
Black • Polled • 1/2 SM 1/2 ANSire: HOOK'S GALILEO 210G
BRIDLE BIT ECLIPSE E744
HOOK'S EVITA 18EDam: A3R HICKOK 104H
MILL BAR HICKOK 7242
A3R PREMIUM 9D

| | |
|----------|------|
| Adj. BW | 72 |
| Adj. WW | 589 |
| WW Ratio | 108 |
| Adj. YW | 970 |
| YW Ratio | 98 |
| Adj. SC | 35.8 |

| CE | BW | WW | YW | MCE | MM | MWW | Stay | CW | YG | MB | BF | REA | API | TI |
|------|----|------|-------|-----|------|------|------|------|------|-----|-------|-----|-----|-----|
| 15.1 | -1 | 83.6 | 135.2 | 8.5 | 33.9 | 76.1 | 17.8 | 45.4 | -.21 | .85 | -.039 | .83 | 176 | 101 |
| 25 | 35 | 25 | 20 | 25 | 2 | 4 | 20 | 20 | 55 | 4 | 55 | 25 | 3 | 3 |

Moderate framed bull with GE-EPDs that rank in the top 5% or better for MILK, MWW, DOC, and MARB – that rollup to top 2% TI and 3% API.



Lot 11

11 A3R HERDBOOK 138L ASA# (4248637)

Tattoo: 138L • BD: 3/20/23
Homo Black • Polled • 1/2 SM 1/2 AN

Sire: CLRS HERDBOOK 316H
GW TRIPLE CROWN 018C
CLRS ALL XCELLENCE 316 A

Dam: A3R COMRADE 78F
CONNELLY COMRADE 1385
A3R ROBUST 152D

| | |
|----------|------|
| Adj. BW | 84 |
| Adj. WW | 713 |
| WW Ratio | 122 |
| Adj. YW | 1165 |
| YW Ratio | 116 |
| Adj. SC | 38.3 |

| CE | BW | WW | YW | MCE | MM | MWW | Stay | CW | YG | MB | BF | REA | API | TI |
|------|------|------|-------|-----|------|------|------|------|------|-----|-------|------|-----|----|
| 11.7 | -0.4 | 91.5 | 144.4 | 5.2 | 30.3 | 76.5 | 16 | 66.1 | -.33 | .44 | -.050 | 1.36 | 148 | 94 |
| 65 | 45 | 10 | 10 | 80 | 10 | 4 | 35 | 2 | 20 | 40 | 45 | 1 | 30 | 10 |

Highest GE-EPD for REA (top 1%), 2% CW, 10% WW, 15% YW (highest YW ratio of offering), and 15% TI. Calm docility (top 5%), good milk (10%) and large SC.



Lot 12

12 P B R HERDBOOK 149L ASA# (4248647)

Tattoo: 149L • BD: 3/22/23
Homo Black • Polled • 1/2 SM 1/2 AN

Sire: CLRS HERDBOOK 316H
GW TRIPLE CROWN 018C
CLRS ALL XCELLENCE 316 A

Dam: A3R ABSOLUTE 44D
K C F BENNETT ABSOLUTE
A3R SHEAR FORCE 73Z

| | |
|----------|------|
| Adj. BW | 84 |
| Adj. WW | 604 |
| WW Ratio | 110 |
| Adj. YW | 1020 |
| YW Ratio | 103 |
| Adj. SC | 35.4 |

| CE | BW | WW | YW | MCE | MM | MWW | Stay | CW | YG | MB | BF | REA | API | TI |
|------|------|------|-------|-----|----|------|------|------|------|-----|-------|-----|-----|----|
| 10.7 | -0.2 | 86.8 | 130.9 | 5.6 | 23 | 66.3 | 16.7 | 44.3 | -.30 | .56 | -.063 | .89 | 151 | 92 |
| 75 | 45 | 15 | 25 | 75 | 60 | 30 | 30 | 20 | 30 | 25 | 20 | 20 | 25 | 15 |

Visual stand-out with across-the-board, top 30% or higher GE-EPDs for ten traits: WW, YW, MWW, STAY, DOC, CW, YG, MARB, FAT, REA, API and TI (15%)



Lot 13

13 A3R HERDBOOK 103L ASA# (4248607)

Tattoo: 103L • BD: 3/17/23
Homo Black • Homo Polled • 1/2 SM 1/2 AN

Sire: CLRS HERDBOOK 316H
GW TRIPLE CROWN 018C
CLRS ALL XCELLENCE 316 A

Dam: A3R ALL IN 141E
DEER VALLEY ALL IN
A3R INVASION 105U

| | |
|----------|------|
| Adj. BW | 79 |
| Adj. WW | 562 |
| WW Ratio | 96 |
| Adj. YW | 921 |
| YW Ratio | 92 |
| Adj. SC | 35.7 |

| CE | BW | WW | YW | MCE | MM | MWW | Stay | CW | YG | MB | BF | REA | API | TI |
|------|------|------|-------|-----|------|------|------|------|------|-----|-------|-----|-----|----|
| 14.4 | -2.2 | 75.9 | 114.7 | 9.6 | 22.9 | 61.7 | 17.1 | 34.3 | -.26 | .54 | -.059 | .66 | 154 | 88 |
| 30 | 20 | 50 | 55 | 15 | 60 | 55 | 25 | 45 | 40 | 25 | 30 | 55 | 20 | 25 |

Top 25% or better GE-EPDs for BW, MCE, STAY, DOC, and MARB leading to top 25% TI and 20% API.



Lot 14

14 P B R HERDBOOK 67L ASA# (4283347)

Tattoo: 67L • BD: 3/13/23
Homo Black • Polled • 1/2 SM 1/2 AN

Sire: CLRS HERDBOOK 316H
GW TRIPLE CROWN 018C
CLRS ALL XCELLENCE 316 A

Dam: P B R ABSOLUTE 41D 251F
A3R ABSOLUTE 41D
A3R PONCHO 178Y

| | |
|----------|------|
| Adj. BW | 79 |
| Adj. WW | 605 |
| WW Ratio | 99 |
| Adj. YW | 1075 |
| YW Ratio | 99 |
| Adj. SC | 38.9 |

| CE | BW | WW | YW | MCE | MM | MWW | Stay | CW | YG | MB | BF | REA | API | TI |
|------|------|------|-------|-----|------|-----|------|------|------|-----|-------|-----|-----|----|
| 14.5 | -0.6 | 89.2 | 138.1 | 9.3 | 29.6 | 74 | 19.8 | 54.9 | -.22 | .31 | -.040 | .96 | 150 | 89 |
| 30 | 40 | 15 | 15 | 20 | 15 | 10 | 10 | 10 | 50 | 60 | 55 | 15 | 25 | 25 |

Maternal and Muscle – GE-EPDs that are top 20% or better for WW, YW, MCE, MILK, MWW, STAY, DOC, CW, and REA.

15**P B R HERDBOOK 81L**

ASA# (4248589)

Tattoo: 81L • BD: 3/14/23
Hetero Black • Polled • 1/2 SM 1/2 ANSire: CLRS HERDBOOK 316H
GW TRIPLE CROWN 018C
CLRS ALL XCELLENCE 316 ADam: A3R FOCUS 4925 3B
CONNEALY IN FOCUS 4925
A3R PREDESTINED701T 123Z

| | |
|----------|------|
| Adj. BW | 79 |
| Adj. WW | 610 |
| WW Ratio | 112 |
| Adj. YW | 1019 |
| YW Ratio | 103 |
| Adj. SC | 37 |

| CE | BW | WW | YW | MCE | MM | MWW | Stay | CW | YG | MB | BF | REA | API | TI |
|------|-----|------|-------|-----|------|------|------|------|------|-----|-------|-----|-----|----|
| 14.4 | 0.3 | 88.4 | 129.5 | 9.9 | 23.9 | 68.2 | 17.3 | 58.2 | -.21 | .45 | -.053 | .87 | 149 | 90 |
| 30 | 55 | 15 | 30 | 15 | 50 | 25 | 25 | 4 | 55 | 40 | 30 | 20 | 25 | 20 |

Muscle (top 15% REA), growth (top 15% WW, 4% CW), and maternal (top 15% MCE, 25% STAY, 10% DOC). Dam has produced 8 calves with 368-day avg. CI.

**Lot 15****16****A3R CROWN 102L**

ASA# (4248599)

Tattoo: 102L • BD: 3/16/23
Black • Polled • 1/2 SM 1/2 ANSire: GW TRIPLE CROWN 018C
J BAR J NIGHTRIDE 225Z
GW MISS GPRD 359ADam: A3R SURE FIRE 128H
G A R SURE FIRE
A3R XAVIER 96C

| | |
|----------|------|
| Adj. BW | 77 |
| Adj. WW | 589 |
| WW Ratio | 101 |
| Adj. YW | 978 |
| YW Ratio | 98 |
| Adj. SC | 37.6 |

| CE | BW | WW | YW | MCE | MM | MWW | Stay | CW | YG | MB | BF | REA | API | TI |
|------|------|------|-------|-----|------|-----|------|------|------|-----|-------|-----|-----|----|
| 15.2 | -1.2 | 83.4 | 140.3 | 9.2 | 20.9 | 62 | 15.5 | 54.2 | -.18 | .71 | -.033 | .88 | 165 | 96 |
| 25 | 30 | 25 | 15 | 20 | 75 | 50 | 45 | 10 | 65 | 10 | 55 | 20 | 10 | 10 |

The only Triple Crown son of the offering - top 10% for API & TI - combines top 25% or better genetic merit for CE, WW, YW, ADG, MCE, DOC, CW, MARB and REA.

**Lot 16****17****P B R ORIGINAL 116L**

ASA# (4248617)

Tattoo: 116L • BD: 3/18/23
Black • Polled • 1/2 SM 1/2 ANSire: IR ORIGINAL H341
G A R ORIGINAL SIN
IR MS VIENNA E758Dam: P B R ICONIC 58H
LRS ICONIC 303C
A3R HUSKER 130Y

| | |
|----------|------|
| Adj. BW | 77 |
| Adj. WW | 609 |
| WW Ratio | 111 |
| Adj. YW | 1009 |
| YW Ratio | 102 |
| Adj. SC | 36.2 |

| CE | BW | WW | YW | MCE | MM | MWW | Stay | CW | YG | MB | BF | REA | API | TI |
|----|-----|----|-------|-----|------|------|------|------|------|-----|-------|-----|-----|----|
| 14 | 0.5 | 83 | 125.6 | 8.1 | 26.4 | 69.8 | 15.8 | 43.9 | -.17 | .77 | -.031 | .75 | 162 | 95 |
| 35 | 60 | 25 | 35 | 30 | 30 | 20 | 40 | 20 | 70 | 10 | 55 | 40 | 15 | 10 |

Outcross to our more prevalent pedigrees, with striking look and combination of API (top 15%) and TI (10%) - especially high MARB (10%) and top 25% or better WW, MWW and CW.

**Lot 17****18****A3R ORIGINAL 43L**

ASA# (4248554)

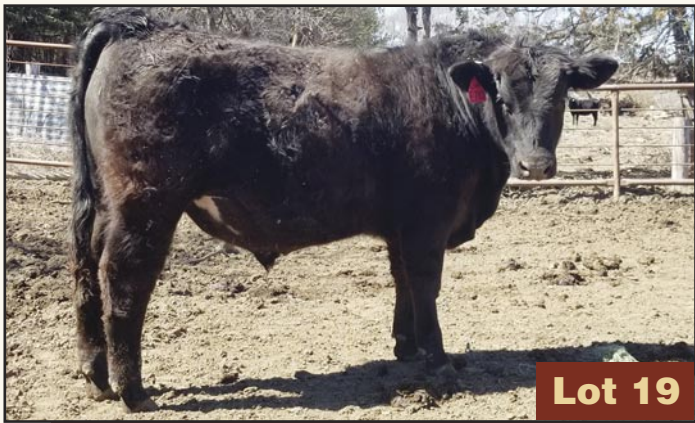
Tattoo: 43L • BD: 3/9/23
Black • Polled • 1/2 SM 1/2 ANSire: IR ORIGINAL H341
G A R ORIGINAL SIN
IR MS VIENNA E758Dam: A3R ABSOLUTE 41D 186F
A3R ABSOLUTE 41D
A3R DUAL FOCUS 138X

| | |
|----------|------|
| Adj. BW | 74 |
| Adj. WW | 671 |
| WW Ratio | 115 |
| Adj. YW | 981 |
| YW Ratio | 98 |
| Adj. SC | 35.7 |

| CE | BW | WW | YW | MCE | MM | MWW | Stay | CW | YG | MB | BF | REA | API | TI |
|------|------|------|-------|-----|------|------|------|------|------|-----|------|-----|-----|----|
| 16.2 | -0.6 | 88.6 | 140.4 | 9.8 | 25.9 | 72.1 | 20.2 | 32.4 | -.06 | .67 | .008 | .57 | 173 | 97 |
| 15 | 40 | 15 | 15 | 15 | 35 | 10 | 4 | 55 | 90 | 15 | 95 | 70 | 5 | 5 |

Outcross with nifty numbers - top 4% STAY, DOC, TI, and API - predicted to produce long-lived, easy-calving, productive daughters, and progeny with high MARB (top 15%).

**Lot 18**



Lot 19

19 A3R ORIGINAL 100L ASA# (4306782)

Tattoo: 100L • BD: 3/16/23
Hetero Black • Polled • 1/4 SM 5/8 AN 1/8 CS

Sire: IR ORIGINAL H341
G A R ORIGINAL SIN
IR MS VIENNA E758

Dam: 710E

| | |
|----------|------|
| Adj. BW | 89 |
| Adj. WW | 659 |
| WW Ratio | |
| Adj. YW | 1200 |
| YW Ratio | |
| Adj. SC | 37.1 |

| CE | BW | WW | YW | MCE | MM | MWW | Stay | CW | YG | MB | BF | REA | API | TI |
|----|----|----|----|-----|----|-----|------|----|----|----|----|-----|-----|----|
| | | | | | | | | | | | | | | |

Genomic verified sire parentage, but no GE-EPDs available due to unidentified dam parentage. Highest adj. YW and second highest adj. WW of offering, from outcross sire that's an outlier for growth, docility, marbling and muscle.



Lot 20

20 P B R WACO 27L ASA# (4248541)

Tattoo: 27L • BD: 3/6/23
Homo Black • Polled • 3/8 SM 17/32 AN 3/32 CS

Sire: CCR WACO 4142G
CCR ABILENE 6018C
CCR MS CATALYST 4142B

Dam: P B R VISION 133G
P B R VISION 133G 139J
A3R GRANITE 40D

| | |
|----------|------|
| Adj. BW | 75 |
| Adj. WW | 628 |
| WW Ratio | 113 |
| Adj. YW | 962 |
| YW Ratio | 99 |
| Adj. SC | 39.6 |

| CE | BW | WW | YW | MCE | MM | MWW | Stay | CW | YG | MB | BF | REA | API | TI |
|----|------|------|-------|-----|------|------|------|------|-----|-----|-------|-----|-----|----|
| 16 | -1.1 | 69.1 | 106.3 | 9.7 | 24.1 | 58.4 | 12.8 | 29.4 | -14 | .79 | -.019 | .55 | 153 | 87 |
| 15 | 30 | 75 | 75 | 15 | 50 | 70 | 70 | 65 | 75 | 10 | 85 | 75 | 20 | 30 |

Heifer bull prospect based on top 15% for CE – that's also predicted to produce easy calving daughters (top 15% for CEM) and high MARB carcasses (top 10%. Very large SC. Out of first-calf heifer.



Lot 21

21 A3R RAWHIDE 19L ASA# (4248533)

Tattoo: 19L • BD: 3/3/23
Homo Black • Polled • 1/4 SM 3/4 AN

Sire: POSS RAWHIDE
POSS MAVERICK
POSS BLUEBLOOD 6502

Dam: A3R TOP GRADE 142D
MCM TOP GRADE 018X
A3R TRUST 19Y

| | |
|----------|------|
| Adj. BW | 69 |
| Adj. WW | 591 |
| WW Ratio | 101 |
| Adj. YW | 983 |
| YW Ratio | 98 |
| Adj. SC | 37.4 |

| CE | BW | WW | YW | MCE | MM | MWW | Stay | CW | YG | MB | BF | REA | API | TI |
|------|------|------|-------|------|------|------|------|------|------|-----|-------|-----|-----|----|
| 17.6 | -0.8 | 85.1 | 133.4 | 10.8 | 31.2 | 74.1 | 15.8 | 51.2 | -.08 | .69 | -.022 | .60 | 162 | 95 |
| 10 | 35 | 20 | 20 | 10 | 10 | 10 | 40 | 10 | 90 | 15 | 70 | 65 | 15 | 10 |

GE-EPDs that are top 20% or better for 12 traits and indexes, including CE, WW, YW, ADG, MCE, MILK, MWW, DOC, CW, MARB, TI and API. Dam has produced 6 calves with avg. calving interval of 361 days and avg. progeny WW ratio of 103.



Lot 22

22 P B R RAWHIDE 83L ASA# (4248591)

Tattoo: 83L • BD: 3/14/23
Homo Black • Polled • 1/8 SM 27/32 AN 1/32 CS

Sire: POSS RAWHIDE
POSS MAVERICK
POSS BLUEBLOOD 6502

Dam: P B R ABSOLUTE 41D 146G
A3R ABSOLUTE 41D
P B R WEIGH UP 91E

| | |
|----------|------|
| Adj. BW | 75 |
| Adj. WW | 659 |
| WW Ratio | 120 |
| Adj. YW | 1078 |
| YW Ratio | 109 |
| Adj. SC | 39 |

| CE | BW | WW | YW | MCE | MM | MWW | Stay | CW | YG | MB | BF | REA | API | TI |
|------|------|------|-------|------|------|------|------|------|-----|-----|------|-----|-----|----|
| 18.3 | -3.1 | 79.5 | 127.1 | 11.1 | 33.5 | 73.7 | 16.7 | 53.8 | .08 | .77 | .030 | .55 | 170 | 96 |
| 5 | 10 | 40 | 30 | 4 | 3 | 10 | 30 | 10 | 99 | 10 | 99 | 75 | 10 | 10 |

Heifer bull prospect and more – top 10% API & TI. Top ranking GE-EPDs for CE (5%), BW (10%), YW & ADG (30%), MCE (4%), MILK (3%), CW (10%), and MARB (10%).

23**A3R RAWHIDE 15L**

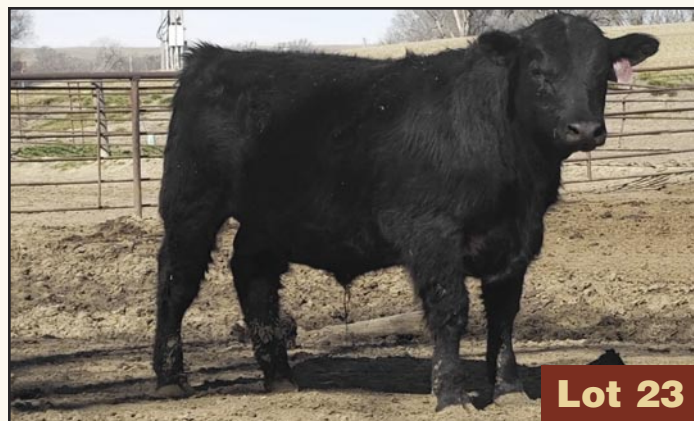
ASA# (4248531)

Tattoo: 15L • BD: 3/2/23
Homo Black • Polled • 3/4 AN 7/32 CS 1/32 ARSire: POSS MAVERICK
POSS RAWHIDE
POSS BLUEBLOOD 6502Dam: A3R BOULDER 1339A
A3R BOULDER 93J
A3R XAVIER 97C

| | |
|----------|------|
| Adj. BW | 75 |
| Adj. WW | 556 |
| WW Ratio | 101 |
| Adj. YW | 994 |
| YW Ratio | 108 |
| Adj. SC | 37.3 |

| CE | BW | WW | YW | MCE | MM | MWW | Stay | CW | YG | MB | BF | REA | API | TI |
|------|------|------|-------|-----|------|------|------|------|-----|-----|------|-----|-----|----|
| 15.8 | -2.3 | 86.3 | 144.3 | 9.6 | 28.3 | 71.8 | 11.9 | 56.3 | .05 | .62 | .019 | .62 | 152 | 95 |
| 20 | 15 | 20 | 10 | 15 | 20 | 15 | 80 | 5 | 99 | 20 | 99 | 65 | 25 | 10 |

Heifer bull prospect with GE-EPDs that are top 15% or better for BW, YW, ADG, MCE, and CW. Out of picturesque first-calf, Boulder daughter.

**Lot 23****24****P B R RAWHIDE 137L**

ASA# (4283346)

Tattoo: 137L • BD: 3/20/23
Homo Black • Polled • 1/8 SM 7/8 ANSire: POSS MAVERICK
POSS RAWHIDE
POSS BLUEBLOOD 6502Dam: EXAR DENVER 2002B
P B R DENVER 295F
A3R GRADUATE 20C

| | |
|----------|------|
| Adj. BW | 90 |
| Adj. WW | 618 |
| WW Ratio | 101 |
| Adj. YW | 1093 |
| YW Ratio | 101 |
| Adj. SC | 39.3 |

| CE | BW | WW | YW | MCE | MM | MWW | Stay | CW | YG | MB | BF | REA | API | TI |
|------|----|------|-------|-----|------|------|------|------|-----|-----|------|-----|-----|----|
| 12.1 | 0 | 85.4 | 139.4 | 8.7 | 32.1 | 75.7 | 14.5 | 74.3 | .07 | .65 | .015 | .75 | 149 | 92 |
| 60 | 50 | 20 | 15 | 25 | 5 | 5 | 55 | 1 | 99 | 15 | 99 | 40 | 30 | 15 |

Top 1% ranking GE-EPD for CW, 20% growth, 15% MARB and TI. Daughters predicted to reach puberty early (39 cm SC) and wean heavy calves (top 5% MILK).

**Lot 24****25****P B R RAWHIDE 88L**

ASA# (4248596)

Tattoo: 88L • BD: 3/15/23
Homo Black • Polled • 1/4 SM 23/32 AN 1/32 MXSire: POSS MAVERICK
POSS RAWHIDE
POSS BLUEBLOOD 6502Dam: MCM TOP GRADE 018X
A3R TOP GRADE 86D
A3R PREDESTINED 28Y

| | |
|----------|------|
| Adj. BW | 74 |
| Adj. WW | 567 |
| WW Ratio | 104 |
| Adj. YW | 1080 |
| YW Ratio | 110 |
| Adj. SC | 39.6 |

| CE | BW | WW | YW | MCE | MM | MWW | Stay | CW | YG | MB | BF | REA | API | TI |
|------|------|------|-------|-----|------|------|------|------|-----|-----|-------|-----|-----|-----|
| 12.7 | -1.2 | 92.4 | 159.4 | 8.7 | 33.7 | 80.4 | 15.5 | 64.2 | .07 | .82 | -.006 | .45 | 168 | 103 |
| 50 | 30 | 10 | 2 | 25 | 2 | 1 | 45 | 2 | 99 | 5 | 90 | 90 | 10 | 2 |

Growth and Marbling standout. Top 2% TI – from top GE-EPD ranks of 1% (ADG), 2% (CW), 3% (YW) and 5% (MARB). Top 10% API, 2% MILK. Extraordinary dam has produced 6 calves with 366-day CI and avg. progeny WW ratio of 112. Large SC.

**Lot 25****26****P B R RAWHIDE 44L**

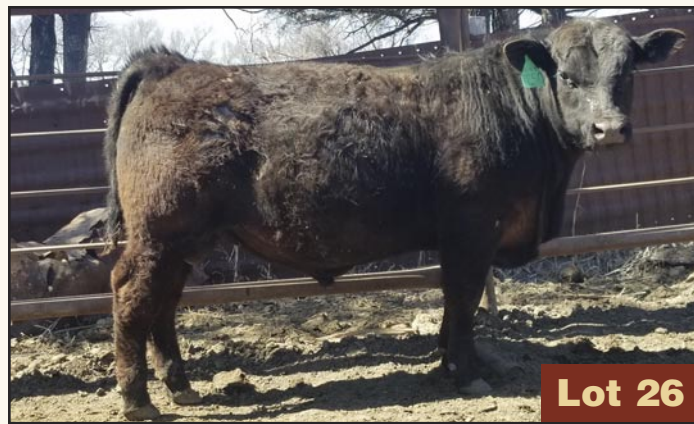
ASA# (4248555)

Tattoo: 44L • BD: 3/9/23
Homo Black • Polled • 13/16 AN 5/32 CS 1/32 ARSire: POSS MAVERICK
POSS RAWHIDE
POSS BLUEBLOOD 6502Dam: TEHAMA TAHOE B767
P B R TAHOE 50J
A3R TOP GRADE 115B

| | |
|----------|------|
| Adj. BW | 80 |
| Adj. WW | 584 |
| WW Ratio | 105 |
| Adj. YW | 998 |
| YW Ratio | 103 |
| Adj. SC | 35.7 |

| CE | BW | WW | YW | MCE | MM | MWW | Stay | CW | YG | MB | BF | REA | API | TI |
|------|------|------|-------|-----|------|------|------|------|-----|-----|------|-----|-----|-----|
| 14.6 | -0.5 | 97.3 | 155.7 | 8.5 | 30.1 | 79.9 | 14.1 | 65.2 | .09 | .72 | .020 | .60 | 160 | 102 |
| 30 | 40 | 3 | 3 | 25 | 10 | 2 | 60 | 2 | 99 | 10 | 99 | 65 | 15 | 2 |

Genomic outlier - top 2% TI, 15% API - top 10% or better GE-EPD for WW, YW, ADG, MILK, MWW, DOC, CW and MARB. Out of first-calf Tahoe daughter.

**Lot 26**



Lot 27

27

A3R RAWHIDE 145L

ASA# (4248644)

Tattoo: 145L • BD: 3/21/23
Homo Black • Homo Polled • 1/4 SM 3/4 AN

Sire: POSS MAVERICK
POSS RAWHIDE
POSS BLUEBLOOD 6502

Dam: A3R BEACON 70E
HOOK'S BEACON 56B
A3R RAM NATION 16Z

| | |
|----------|------|
| Adj. BW | 84 |
| Adj. WW | 606 |
| WW Ratio | 104 |
| Adj. YW | 1102 |
| YW Ratio | 110 |
| Adj. SC | 38.4 |

| CE | BW | WW | YW | MCE | MM | MWW | Stay | CW | YG | MB | BF | REA | API | TI |
|------|-----|------|-------|------|------|------|------|------|-----|-----|------|-----|-----|-----|
| 18.9 | 0.1 | 94.3 | 152.2 | 11.5 | 29.7 | 77.1 | 14.4 | 59.3 | .17 | .97 | .039 | .43 | 178 | 106 |
| 4 | 50 | 5 | 4 | 3 | 15 | 3 | 55 | 3 | 99 | 2 | 99 | 90 | 3 | 1 |

Elite TI (top 1%) and API (3%) – driven by GE-EPDs in the top 2% from MARB (highest of offering); top 4% for CE, MCE, MWW and CW; top 10% for WW, YW, and ADG.



Lot 28

28

A3R RAWHIDE 150L

ASA# (4248648)

Tattoo: 150L • BD: 3/22/23
Homo Black • Homo Polled • 3/8 SM 5/8 AN

Sire: POSS MAVERICK
POSS RAWHIDE
POSS BLUEBLOOD 6502

Dam: A3R BEACON 54E
HOOK'S BEACON 56B
A3R FOCUS 4925 18A

| | |
|----------|------|
| Adj. BW | 69 |
| Adj. WW | 611 |
| WW Ratio | 105 |
| Adj. YW | 1027 |
| YW Ratio | 102 |
| Adj. SC | 39.4 |

| CE | BW | WW | YW | MCE | MM | MWW | Stay | CW | YG | MB | BF | REA | API | TI |
|------|------|------|-------|------|----|------|------|------|-----|-----|------|-----|-----|----|
| 19.1 | -5.1 | 80.7 | 125.1 | 12.4 | 30 | 70.8 | 15.1 | 57.2 | .10 | .66 | .035 | .58 | 165 | 96 |
| 3 | 2 | 35 | 35 | 2 | 10 | 15 | 50 | 4 | 99 | 15 | 99 | 70 | 10 | 10 |

Heifer bull with lowest GE-EPD for BW (top 2%) and highest CE (top 3%) of offering. Predicted to produce easy-calving (top 2% MCE), easy fleshing, high milk daughters and transmit heavy CW (4%) and high MARB (top 15%).

29

P B R TAHOE 7L

ASA# (4248524)

Tattoo: 7L • BD: 2/26/23
Black • Polled • 13/16 AN 3/16 CS

Sire: TEHAMA UPWARD Y238
TEHAMA TAHOE B767
TEHAMA MARY BLACKBIRD Y684

Dam: P B R VISIONARY 133G
P B R VISION 133G 49J
A3R HUSKER 201Z

| | |
|----------|------|
| Adj. BW | 70 |
| Adj. WW | 571 |
| WW Ratio | 103 |
| Adj. YW | 1061 |
| YW Ratio | 110 |
| Adj. SC | 38.1 |

| CE | BW | WW | YW | MCE | MM | MWW | Stay | CW | YG | MB | BF | REA | API | TI |
|------|------|------|-------|-----|------|------|------|------|-----|-----|-------|-----|-----|-----|
| 17.1 | -1.8 | 91.1 | 153.7 | 8.8 | 27.5 | 74.3 | 19.9 | 57.6 | .01 | .79 | -.005 | .55 | 181 | 102 |
| 10 | 20 | 10 | 3 | 25 | 25 | 10 | 5 | 4 | 99 | 10 | 90 | 75 | 2 | 2 |

Heifer bull prospect with GE-EPDs that are top 2% for TI and API (highest in the sale) driven by top 5% YW and STAY, as well as top 10% CE, CW and MARB. Out of first-calf heifer.

30

P B R TAHOE 74L

ASA# (4248583)

Tattoo: 74L • BD: 3/13/23
Homo Black • Polled • 1/4 SM 5/8 AN 3/32 AR 1/32 CS

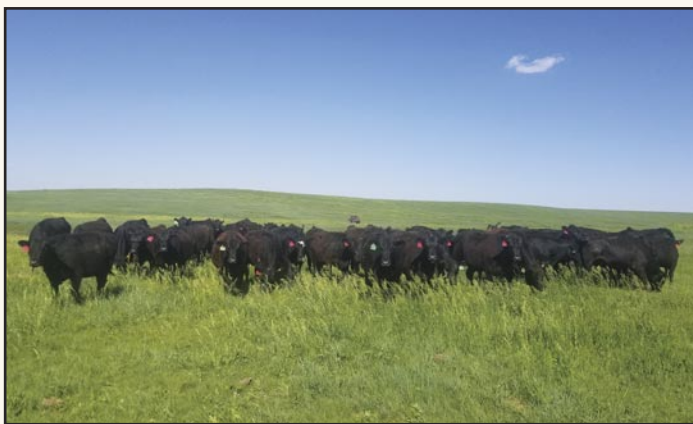
Sire: TEHAMA UPWARD Y238
TEHAMA TAHOE B767
TEHAMA MARY BLACKBIRD Y684

Dam: A3R TOP GRADE 018X
MCM TOP GRADE 115B
A3R PREDESTINED 701T 56Y

| | |
|----------|------|
| Adj. BW | 84 |
| Adj. WW | 590 |
| WW Ratio | 108 |
| Adj. YW | 1044 |
| YW Ratio | 106 |
| Adj. SC | 37.9 |

| CE | BW | WW | YW | MCE | MM | MWW | Stay | CW | YG | MB | BF | REA | API | TI |
|------|------|----|-------|-----|------|------|------|------|-----|-----|-------|-----|-----|----|
| 15.1 | -0.8 | 90 | 144.1 | 7.6 | 31.9 | 78.1 | 21.3 | 35.2 | .03 | .69 | -.002 | .25 | 172 | 97 |
| 25 | 35 | 10 | 10 | 40 | 5 | 3 | 2 | 45 | 99 | 15 | 90 | 99 | 5 | 5 |

Good-looking package of high maternal, growth and grade – top 5% for TI and API – top 3% STAY & MWW, 5% MILK, 10% WW, YW, ADG, and 15% MARB. Recommended for making replacements – dam has had 8 calves, 369-day CI, 103 avg. WW ratio.



31

A3R TAHOE 35L

ASA# (4248547)

Tattoo: 35L • BD: 3/8/23
Homo Black • Polled • 27/32 AN 1/8 CS 1/32 AR

Sire: TEHAMA UPWARD Y238
TEHAMA TAHOE B767
TEHAMA MARY BLACKBIRD Y684

Dam: A3R DENVER 166E
A3R DENVER 166E 169J
A3R HOOVER 24C

| | |
|----------|------|
| Adj. BW | 80 |
| Adj. WW | 641 |
| WW Ratio | 117 |
| Adj. YW | 938 |
| YW Ratio | 102 |
| Adj. SC | 33.7 |

| CE | BW | WW | YW | MCE | MM | MWW | Stay | CW | YG | MB | BF | REA | API | TI |
|------|------|------|-------|-----|------|-----|------|------|------|-----|------|-----|-----|-----|
| 15.9 | -2.4 | 87.1 | 139.8 | 9.5 | 33.8 | 79 | 17.4 | 44.3 | -.02 | .82 | .025 | .72 | 174 | 101 |
| 20 | 15 | 15 | 15 | 15 | 2 | 2 | 25 | 20 | 95 | 5 | 99 | 45 | 4 | 2 |

API and TI in the top 4% and 2%, respectively. GE-EPDs that are top 20% or better for CE, BW, WW, YW, ADG, MCE, MILK, MWW, CW and MARB. 35L was injured while on gain test – which affected his performance – will be evaluated prior to sale for soundness.

32**A3R TAHOE 97J 191L**

ASA# (4248685)

Tattoo: 191L • BD: 4/8/23

Homo Black • Polled • 1/8 SM 11/16 AN 5/32 CS 1/32 AR

Sire: A3R TAHOE 97J
TEHAMA TAHOE B767
A3R SHEAR FORCE 97ZDam: A3R SURE FIRE 79G
G A R SURE FIRE
A3R ROBUST 50E

| | |
|----------|------|
| Adj. BW | 75 |
| Adj. WW | 640 |
| WW Ratio | 110 |
| Adj. YW | 1043 |
| YW Ratio | 104 |
| Adj. SC | 37.4 |

| CE | BW | WW | YW | MCE | MM | MWW | Stay | CW | YG | MB | BF | REA | API | TI |
|------|------|------|-------|-----|------|-----|------|------|-----|-----|------|-----|-----|----|
| 13.1 | -2.1 | 85.1 | 132.9 | 3.8 | 32.2 | 75 | 16.2 | 50.4 | .04 | .81 | .016 | .55 | 165 | 98 |
| 45 | 20 | 20 | 25 | 95 | 4 | 5 | 35 | 10 | 99 | 5 | 99 | 75 | 10 | 4 |

Youngest bull of sale. Nice look and top 4% TI from high MARB (5%) and CW (10%). Respectable top 20% growth, high MILK (4%), solid STAY (35%) and API (10%).

**Lot 32****33****P B R TAHOE 97J 176L**

ASA# (4248670)

Tattoo: 176L • BD: 4/3/23

Homo Black • Polled • 1/8 SM 11/16 AN 5/32 CS 1/32 AR

Sire: A3R TAHOE 97J
TEHAMA TAHOE B767
A3R SHEAR FORCE 97ZDam: P B R ALL IN 150G
DEER VALLEY ALL IN
A3R TOP GRADE 116C

| | |
|----------|------|
| Adj. BW | 80 |
| Adj. WW | 608 |
| WW Ratio | 111 |
| Adj. YW | 1069 |
| YW Ratio | 108 |
| Adj. SC | 34.1 |

| CE | BW | WW | YW | MCE | MM | MWW | Stay | CW | YG | MB | BF | REA | API | TI |
|------|------|------|-------|-----|------|-----|------|------|------|-----|-------|-----|-----|----|
| 14.8 | -0.4 | 75.5 | 130.5 | 7.5 | 31.6 | 71 | 15.9 | 40.3 | -.08 | .61 | -.007 | .59 | 152 | 87 |
| 25 | 45 | 55 | 25 | 40 | 10 | 15 | 40 | 30 | 90 | 20 | 90 | 70 | 25 | 30 |

Home-bred sire. Nice balance of GE-EPDs and ranks for ADG and MILK (top 10%), MARB 20%, YW 25%, CE and CW 30%, and STAY 35%.

**Lot 33****34****A3R TAHOE 97J 190L**

ASA# (4248684)

Tattoo: 190L • BD: 4/8/23

Homo Black • Scurred • 1/8 SM 21/32 AN 3/16 CS 1/32 AR

Sire: A3R TAHOE 97J
TEHAMA TAHOE B767
A3R SHEAR FORCE 97ZDam: A3R PIONEER 173E
A3R PIONEER 87A
A3R FOCUS 4925 144B

| | |
|----------|------|
| Adj. BW | 84 |
| Adj. WW | 611 |
| WW Ratio | 105 |
| Adj. YW | 1012 |
| YW Ratio | 101 |
| Adj. SC | 37.4 |

| CE | BW | WW | YW | MCE | MM | MWW | Stay | CW | YG | MB | BF | REA | API | TI |
|------|-----|------|-------|-----|------|-----|------|------|------|-----|-------|-----|-----|----|
| 12.9 | 0.8 | 85.2 | 140.8 | 5.7 | 26.6 | 70 | 16.8 | 56.3 | -.17 | .37 | -.020 | .98 | 139 | 85 |
| 50 | 65 | 20 | 15 | 70 | 30 | 20 | 30 | 5 | 70 | 50 | 85 | 10 | 45 | 35 |

Home-bred sire. GE-EPD ranks indicate top 4% CW, 10% for YW, ADG, and REA, and top 15% WW and MWW.

35**A3R VISION 143L**

ASA# (4248642)

Tattoo: 143L • BD: 3/21/23

Homo Black • Polled • 1/4 SM 3/4 AN

Sire: A3R VISIONARY 215G
T C A VISIONARY 158
A3R TOP GRADE 164CDam: A3R GRANITE 138D
CONNEALY BLACK GRANITE
A3R ROOKIE 7Y

| | |
|----------|------|
| Adj. BW | 89 |
| Adj. WW | 585 |
| WW Ratio | 100 |
| Adj. YW | 1073 |
| YW Ratio | 107 |
| Adj. SC | 39.4 |

| CE | BW | WW | YW | MCE | MM | MWW | Stay | CW | YG | MB | BF | REA | API | TI |
|-----|-----|------|-------|-----|------|------|------|------|------|-----|-------|-----|-----|----|
| 9.4 | 1.4 | 81.7 | 125.8 | 5.6 | 25.4 | 65.9 | 17.3 | 54.8 | -.07 | .44 | -.014 | .68 | 134 | 82 |
| 90 | 75 | 30 | 35 | 75 | 40 | 35 | 25 | 10 | 90 | 40 | 85 | 50 | 50 | 50 |

Home-bred sire designed to transmit growth, feed efficiency, STAY, muscle and good teat/udder quality. YW ratio of 107 and 39 cm SC.

36**A3R VISION 174L**

ASA# (4248668)

Tattoo: 174L • BD: 4/1/23

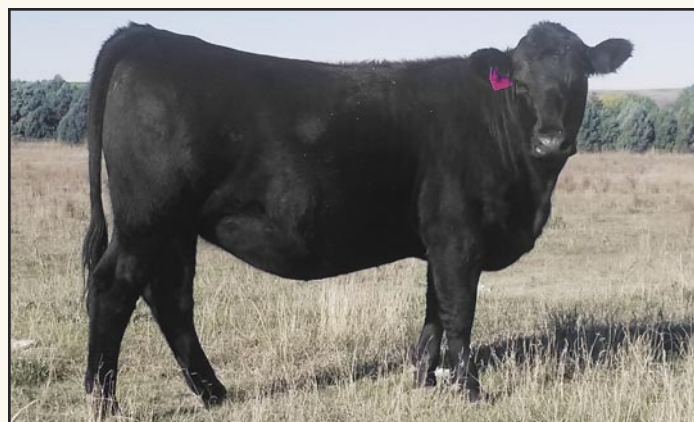
Homo Black • Polled • 1/4 SM 3/4 AN

Sire: A3R VISIONARY 215G
T C A VISIONARY 158
A3R TOP GRADE 164CDam: A3R HOOVER 23C
A3R HOOVER 42A
A3R FOCUS 4925 34A

| | |
|----------|------|
| Adj. BW | 84 |
| Adj. WW | 607 |
| WW Ratio | 104 |
| Adj. YW | 1037 |
| YW Ratio | 103 |
| Adj. SC | 41 |

| CE | BW | WW | YW | MCE | MM | MWW | Stay | CW | YG | MB | BF | REA | API | TI |
|------|-----|------|-----|-----|------|------|------|------|-----|-----|------|-----|-----|----|
| 10.9 | 0.3 | 81.6 | 126 | 7.4 | 28.5 | 69.3 | 21 | 57.5 | .14 | .42 | .028 | .42 | 143 | 82 |
| 75 | 55 | 30 | 35 | 45 | 20 | 20 | 3 | 4 | 99 | 45 | 99 | 90 | 35 | 45 |

Designed for producing long-lived, productive daughters – top 3% STAY, 20% MILK and MWW – huge SC for early puberty.



Bred Heifer 192K – Sired by A3R Vision 215G



2024 Benjamin-PBR-A3R & Bull Customer Cattle Feeding Results

| Darr Feedlot Inc. | Lot | | |
|-------------------------------------|--------|--------|---------|
| Performance Measure | 7340A | 7240B | 7393 |
| Count | 60 | 174 | 163 |
| Sex | Steers | Steers | Heifers |
| Start Weight | 684 | 805 | 769 |
| Average Daily Gain | 3.90 | 4.06 | 3.71 |
| Feed Conversion | 5.93 | 5.86 | 6.27 |
| Death Loss | 1.70% | 0.57% | 0.61% |
| Cost of Gain | \$1.16 | \$1.20 | \$1.24 |
| Live Harvest Weight | 1528 | 1557 | 1383 |
| Dressing Percent | 64.6% | 64.5% | 64.2% |
| Carcass Weight | 979 | 989 | 877 |
| Average Marbling Score ¹ | 577 | 520 | 581 |
| Percent Low Choice | 60% | 59% | 46% |
| Percent CAB | 17% | 26% | 39% |
| Percent Prime | 14% | 4% | 11% |
| Ribeye Area | 15.9 | 15.5 | 13.8 |
| Fat Thickness | 0.67 | 0.61 | 0.74 |

¹Average Marbling Score of 500 = Mid-Choice